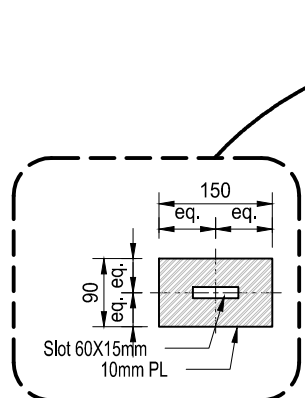


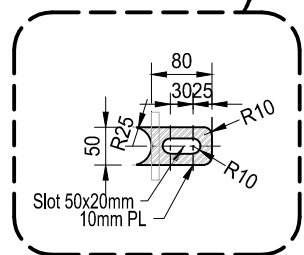
**ELEVATION**  
Scale 1:50

**NOTES:**

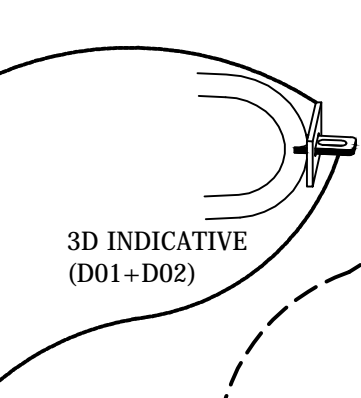
1. Gate to be lockable.
2. Gate is 4200 wide to allow ease of access for emergency vehicles.
3. All welds to be 6mm continuous fillet uno.
4. All burrs and rag are to be removed.
5. Posts are to be hot dipped galvanized after fabrication.
6. Footing shall be 900mm deep and 450mm dia and filled with concrete F'c= 20MPa, in stable foundation, or to engineers detail in unstable foundation.
7. All work will be to a tradesman finish.
8. Contractor to check all dimensions both in factory and on site.
9. Leave item 5 off until erection on site then weld in place and cold gal.
10. Make chain no more than 300mm long.
11. All pipe shall be heavy wall pipe.



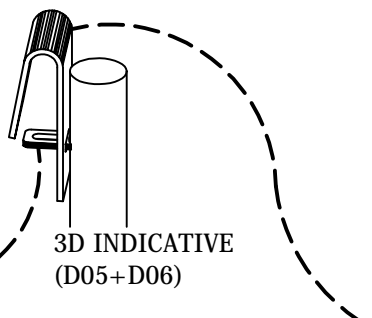
**D1** **DETAIL**  
Right view 1:10



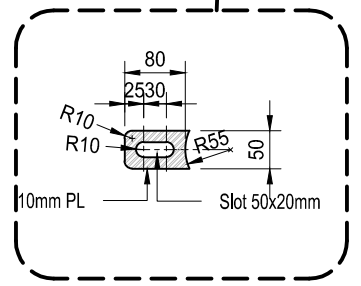
**D2** **DETAIL**  
Top view 1:10



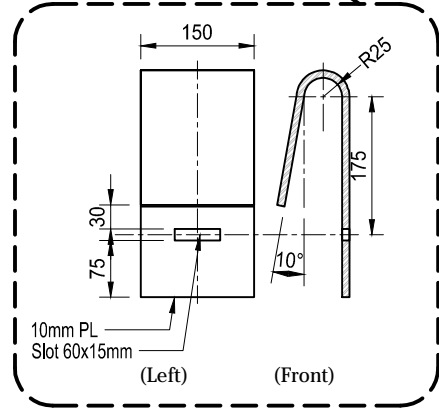
**3D INDICATIVE**  
(D01+D02)



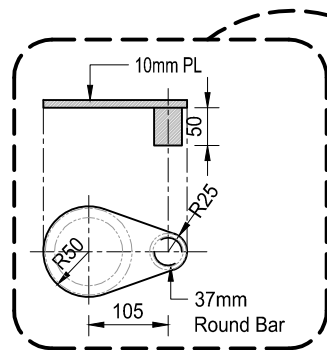
**3D INDICATIVE**  
(D05+D06)



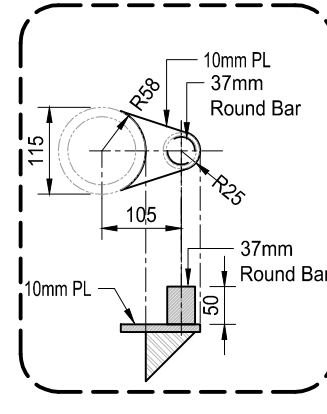
**D5** **DETAIL**  
Top view 1:10



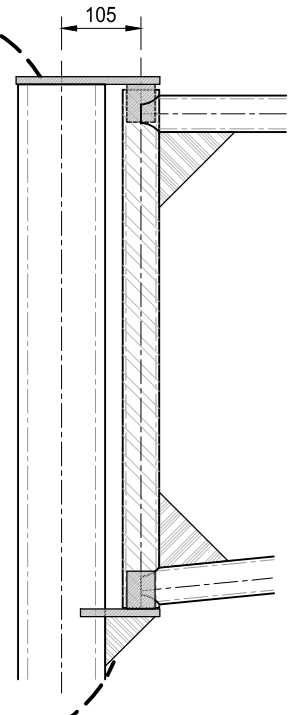
**D6** **DETAIL**  
1:10



**D3** **DETAIL (Hinge top)**  
1:10



**D4** **DETAIL (Hinge bottom)**  
DETAIL 1:10



VERSION	DATE	COMMENTS	PAPER SIZE
03	05/2013	For DCP	A4
02	02/09/2009	For inclusion in DCP amendments	A3
01	07/2002	Created by RAP.	A3

WORK TO FIGURED DIMENSIONS - DO NOT SCALE. DO NOT RELY ON THESE STANDARD DRAWINGS AS THE EQUIVALENT OF, OR SUBSTITUTE FOR, PROJECT-SPECIFIC DESIGN & ASSESSMENT BY A QUALIFIED PROFESSIONAL.



126-138 MAIN ROAD  
SPEERS POINT  
PHONE (02)4921 0333  
[www.lakemac.com.au](http://www.lakemac.com.au)  
SHEET: 1 OF 1

DRAWING TITLE  
**Single Swing Gate**  
DRAWING No: EDSD-603  
VERSION: 3